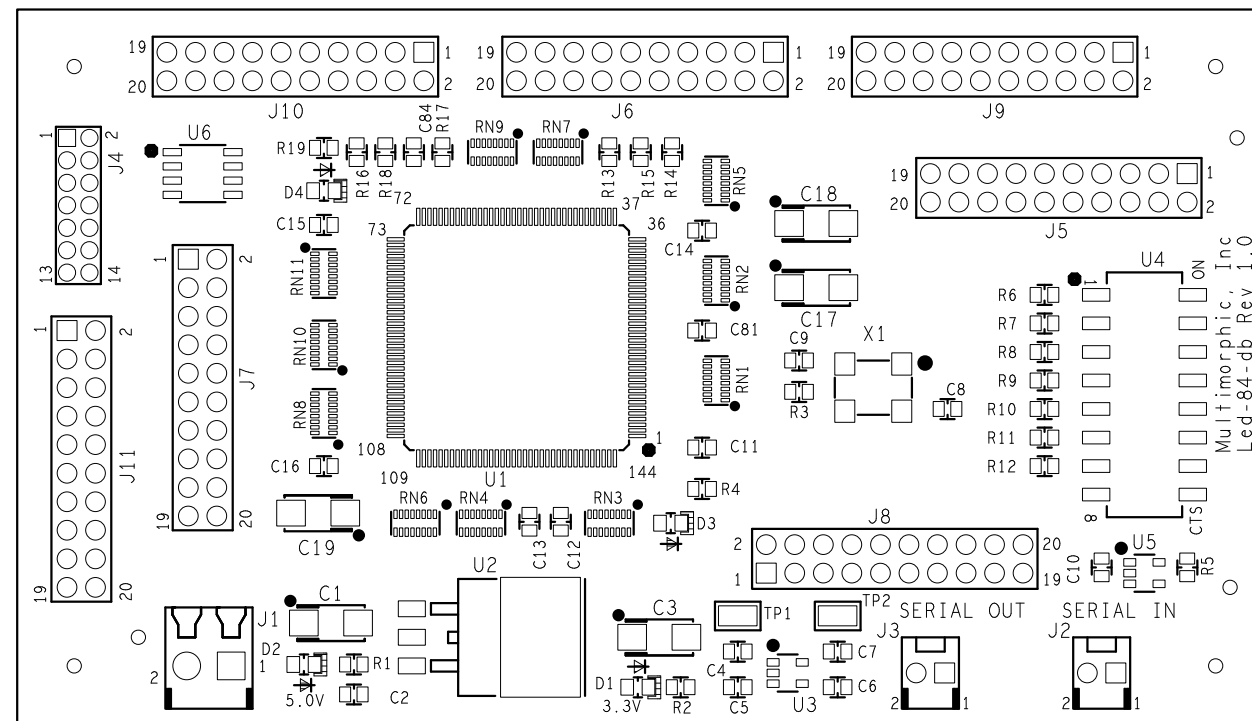


REVISIONS			
REV	DESCRIPTION	DATE	APPROVED
1.0	PRE-PRODUCTION RELEASE	280612	GSTELLENBERG



PRIMARY SIDE

NOTES: UNLESS OTHERWISE SPECIFIED

- ASSEMBLE BOARD PER IPC-A-610. CLASS 2 LATEST REVISION
- THIS ASSEMBLY CONTAINS ELECTROSTATIC DISCHARGE (ESD) SENSITIVE DEVICES. STATIC FREE HANDLING IS REQUIRED.
- INSTALL BAR CODE LABEL IN DESIGNATED AREA AS SHOWN.
- THIS ASSEMBLY DRAWING SHOWS ALL COMPONENTS LOCATIONS FOR ALL ASSEMBLE BOARD OPTIONS. REFER TO SPECIFIC BOM FOR COMPONENTS AND SCHEMATICS USED.
- REFERENCE DESIGNATORS ARE FOR REFERENCE ONLY, AND DO NOT APPEAR ON INDIVIDUAL PARTS.

- ALL ASSEMBLY COMPONENTS AND PRODUCTION PROCESSES SHALL BE ROHS (2002/95/EC) COMPLIANT.
- ORIENTATION OF POLARIZED COMPONENTS IS INDICATED BY A PLUS SIGN OR A BAR ON COMPONENT. POLARITY IS IDENTIFIED ON THE PART.
- SQUARE PADS INDICATE PIN 1 OF THRU HOLE COMPONENTS AND DOT IDENTIFIES PIN ONE LOCATION AND DEVICE ORIENTATION WHEN VIEWED FROM THE TOP.

UNLESS OTHERWISE SPECIFIED		SIGNATURES	DATE	PINBALLCONTROLLERS.COM	
DIMENSIONS ARE IN INCHES		DRAWN	GSTELLENBERG	280612	PCB ASSEMBLY LED-84 Driver Board
TOLERANCES ON:		CHECKED	NAME	DDMMYY	
2 PL DECIMALS +/- .008		EE	GSTELLENBERG	280612	
3 PL DECIMALS +/- .005		ME	NAME	DDMMYY	
4 PL DECIMALS +/- .002		MFG	NAME	DDMMYY	SIZE
Holes +/- .003, ANGLES +/- .5		TEST	NAME	DDMMYY	DWG NO
THIS DRAWING CONTAINS INFORMATION WHICH IS PROPRIETARY PROPERTY OF STELLENBERG. THIS DRAWING IS CONFIDENTIAL AND ITS CONTENTS MAY NOT BE DISCLOSED WITHOUT PRIOR WRITTEN CONSENT OF STELLENBERG.		REL	NAME	DDMMYY	PCASY-0009
SCALE 2:1		SHEET 1 OF 1		REV	1.0