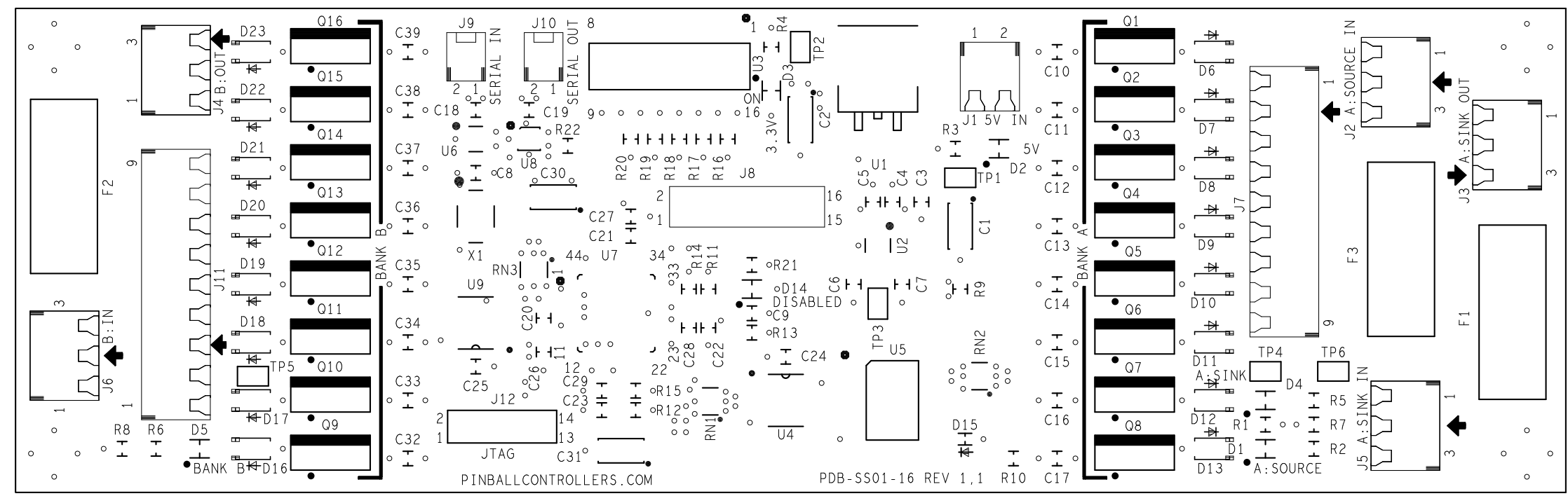


REVISIONS			
REV	DESCRIPTION	DATE	APPROVED
1.0	PRE-PRODUCTION RELEASE	280411	GSTELLENBERG



PRIMARY SIDE

NOTES: UNLESS OTHERWISE SPECIFIED

- ASSEMBLE BOARD PER IPC-A-610. CLASS 2 LATEST REVISION
- THIS ASSEMBLY CONTAINS ELECTROSTATIC DISCHARGE (ESD) SENSITIVE DEVICES. STATIC FREE HANDLING IS REQUIRED.
- INSTALL BAR CODE LABEL IN DESIGNATED AREA AS SHOWN.
- THIS ASSEMBLY DRAWING SHOWS ALL COMPONENTS LOCATIONS FOR ALL ASSEMBLE BOARD OPTIONS. REFER TO SPECIFIC BOM FOR COMPONENTS AND SCHEMATICS USED.
- REFERENCE DESIGNATORS ARE FOR REFERENCE ONLY, AND DO NOT APPEAR ON INDIVIDUAL PARTS.
- ALL ASSEMBLY COMPONENTS AND PRODUCTION PROCESSES SHALL BE ROHS (2002/95/EC) COMPLIANT.
- ORIENTATION OF POLARIZED COMPONENTS IS INDICATED BY A PLUS SIGN OR A BAR ON COMPONENT. POLARITY IS IDENTIFIED ON THE PART. SQUARE PADS INDICATE PIN 1 OF THRU HOLE COMPONENTS AND DOT IDENTIFIES PIN ONE LOCATION AND DEVICE ORIENTATION WHEN VIEWED FROM THE TOP.

UNLESS OTHERWISE SPECIFIED		SIGNATURES	DATE	PINBALLCONTROLLERS.COM
DIMENSIONS ARE IN INCHES TOLERANCES ON: 2 PL DECIMALS +/- .008 3 PL DECIMALS +/- .005 4 PL DECIMALS +/- .002 HOLES +/- .003, ANGLES +/- .5		DRAWN GSTELLENBERG	080611	
THIS DRAWING CONTAINS INFORMATION WHICH IS PROPRIETARY PROPERTY OF STELLENBERG. THIS DRAWING IS CONFIDENTIAL AND ITS CONTENTS MAY NOT BE DISCLOSED WITHOUT PRIOR WRITTEN CONSENT OF STELLENBERG.		CHECKED NAME	DDMMYY	PDB-SS01-16 P-ROC DRIVER BOARD
		EE GSTELLENBERG	080611	
		ME NAME	DDMMYY	SCALE 2:1 SHEET 1 OF 1
		MFG NAME	DDMMYY	
		TEST NAME	DDMMYY	
		REL NAME	DDMMYY	